

FAQs

Sonifex Pro Audio Streamers Frequently Asked Questions (FAQ)

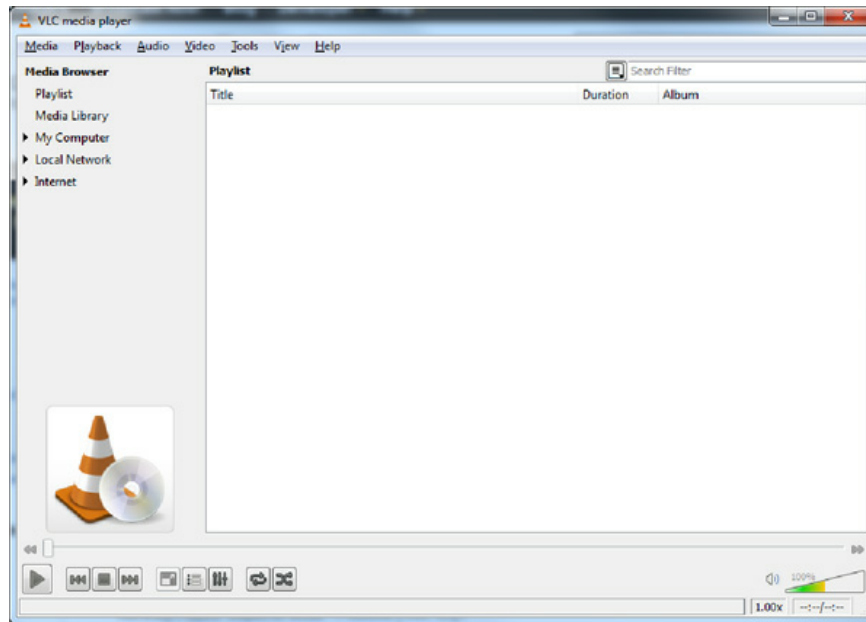
This FAQ (frequently asked questions) answers some of the popular questions asked about the Pro Audio Streamers. If you have any specific questions regarding the operation the Pro Audio Streamers which aren't covered below, please contact your nearest distributor, or Sonifex directly.

Pro Audio Streamer and VLC test setups:

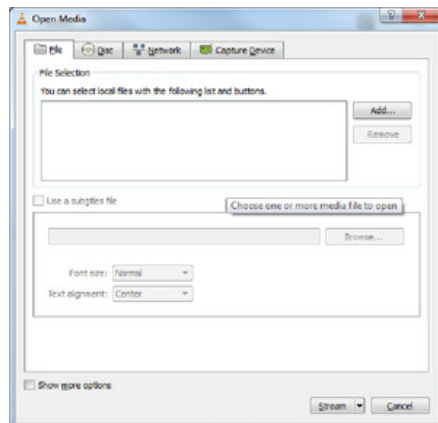
[Download this FAQ as a PDF file >](#)

VLC GUI:

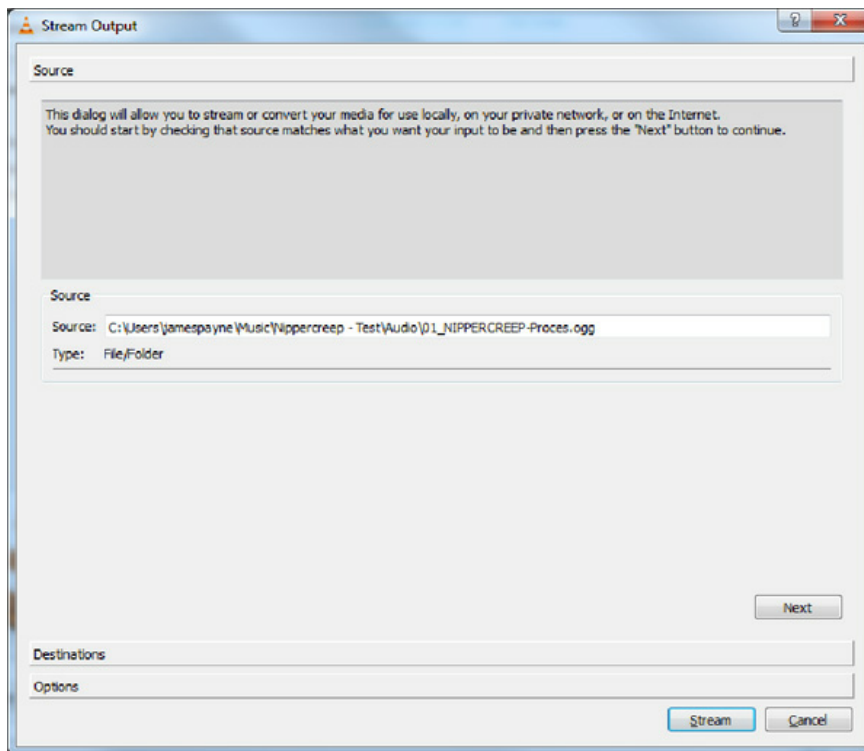
RTP VLC to Pro Audio Streamer PS-PLAY/PS-AMP (so opening a file on a PC and streaming it to a Pro Audio Streamer PS-PLAY).



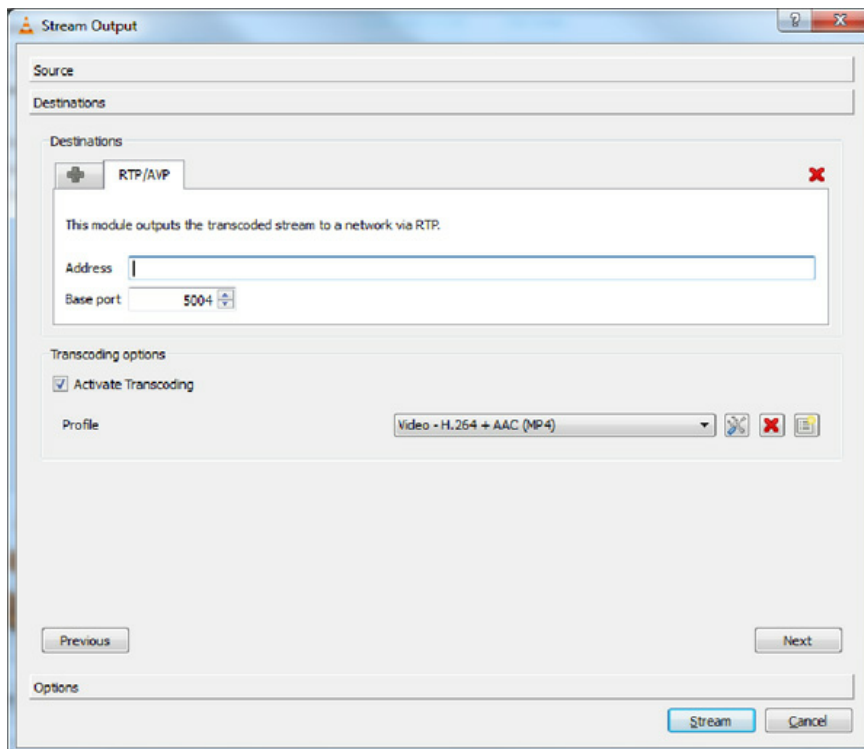
To stream from VLC using RTP click media and streaming.



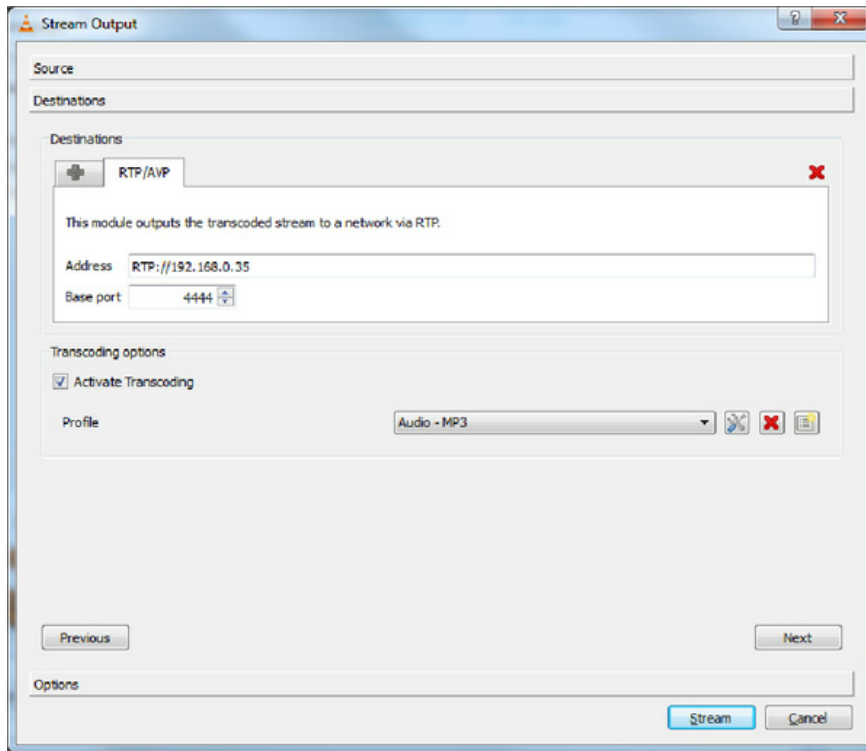
In the file selection box click Add and add an audio file to playback, once the track is showing in the file selection click stream.



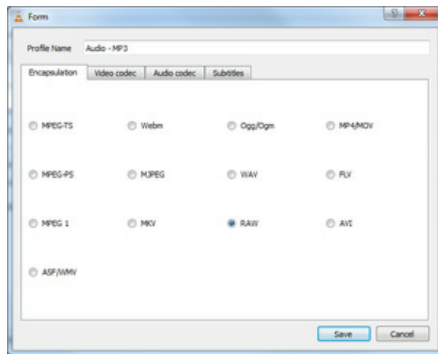
Click next change the destination to RTP Audio/Video profile and click add next to the destination.



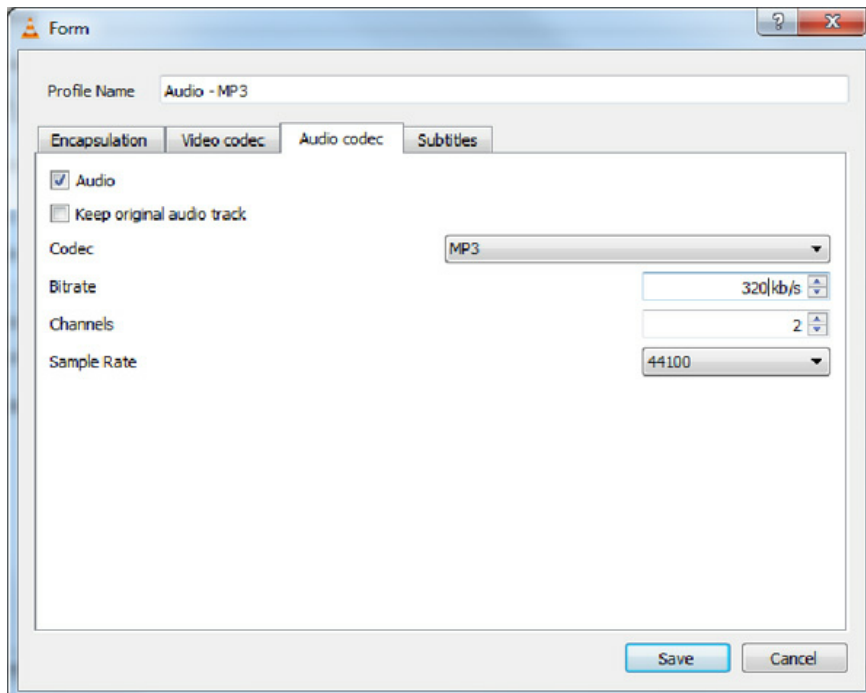
Change the port if needed to the required value for this example port 4444 will be used and set the address to RTP:// and then the IP address required, e.g. RTP://192.168.0.35



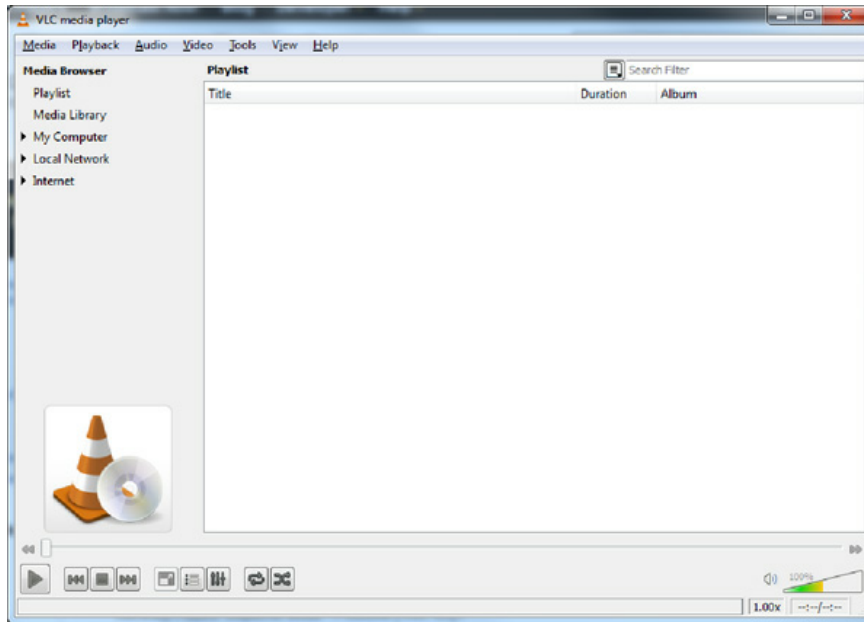
We also need to ensure the audio is in a format that is supported by the PS-PLAY, to do this select activate transcoding and set the profile to audio-MP3 the PS-PLAY/PS-AMP support all MP3 bitrates up to 320 k so in order to set this click the spanner next to the profile selection.



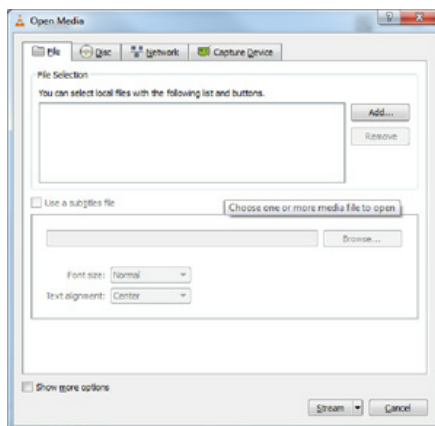
Set encapsulation to RAW set the bitrate to 128, 160, 192, 256 or 320k.



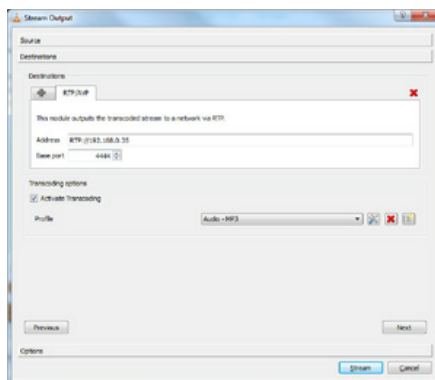
HTTP VLC to Pro-Audio Streamer PS-PLAY:



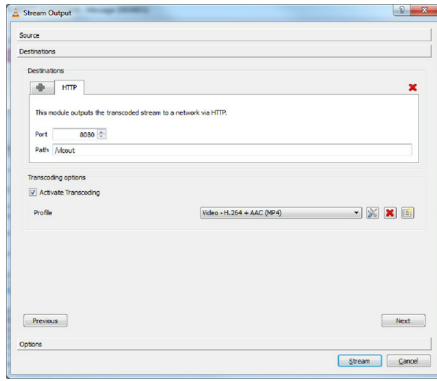
Click media and Streaming.



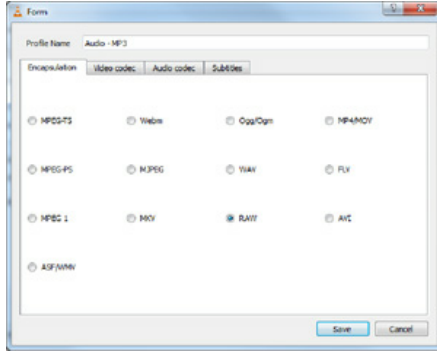
In the file selection box click Add and add an audio file to playback, once the track is showing in the file selection click stream.



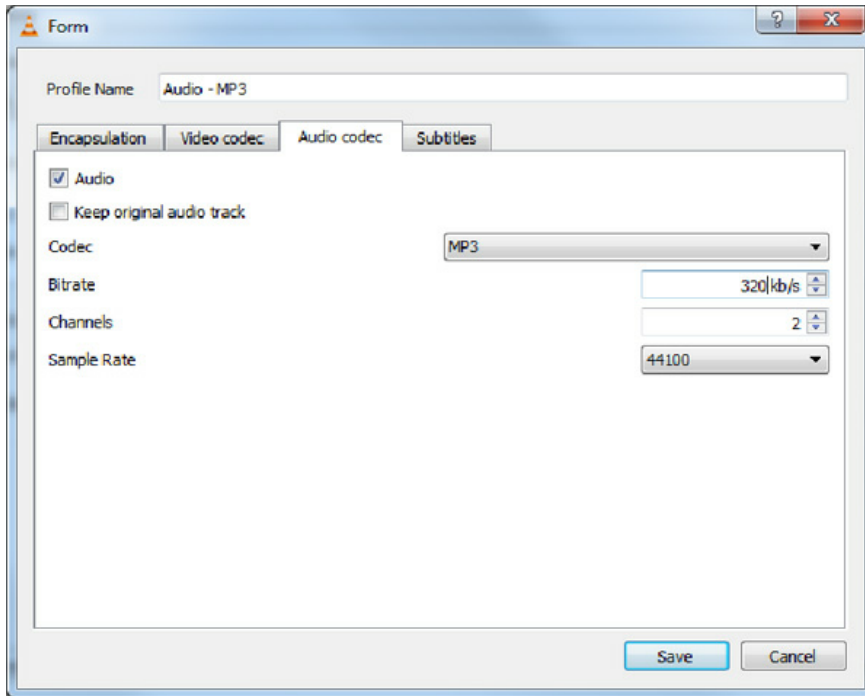
Click next and change the destination to HTTP profile and click add next to the destination.



Enter a port number and a path. We also need to ensure the audio is in a format that is supported by the PS-PLAY, to do this select activate transcoding and set the profile to audio-MP3 the PS-PLAY/PS-AMP support all MP3 bitrates up to 320 k so in order to set this click the spanner next to the profile selection.

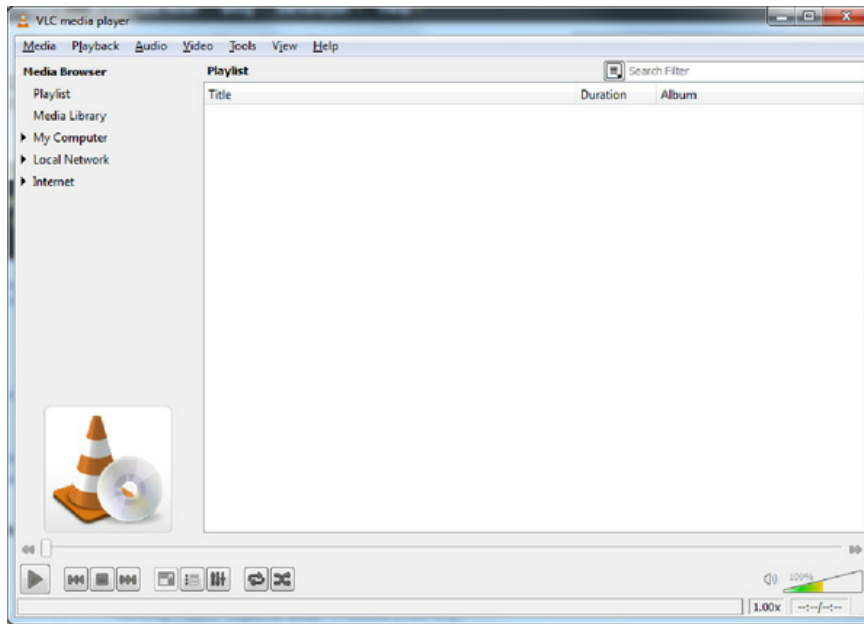


Set encapsulation to RAW set the bitrate to 128, 160, 192, 256 or 320k.

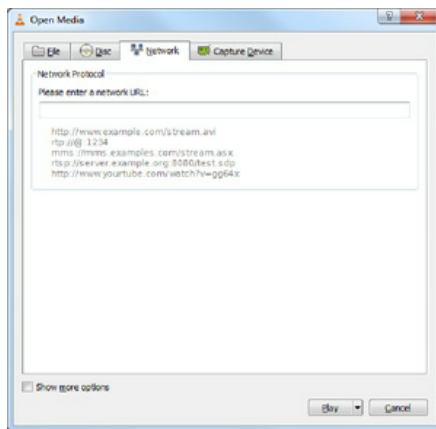


PS-SEND to VLC

From the GUI:



Click Media Open network stream.



If the PS-SEND is configured to send an individual RTP stream then enter
`rtp://0.0.0.0:portnum*`

(* where portnum is the streaming port defined on the PS-SEND)
 in the network URL and click play

to receive a http stream enter

`http://xxx.xxx.xxx.xxx:portnum/radiopath*`

(* where xxx.xxx.xxx.xxx is the IP address of the PS-Send
 portnum is the streaming port of the PS-Send
 and radiopath is the streaming radio path of the PS-Send (set to pssend by default))
 in the network URL and click play.

PS-SEND and PS-PLAY/ PS-AMP Icecast/Shoutcast Setup:

In cases where multiple clients may need to connect to a stream internet radio for example then the PS-SEND, PS-PLAY/PS-AMP support streaming to and from Icecast/ Shoutcast Servers.

A PS-SEND can be connected to a Shoutcast stream as either a source or a relay.

In cases where a dedicated online Icecast or Shoutcast streaming solution is not being used then an Icecast server can be installed on a PC on the network. This server is then capable of handling multiple streams from multiple sends and redistributing them.

Icecast:

The Icecast server install package can be downloaded from here:

<http://www.icecast.org/download.php>

Once installed and opened the interface appears as below:



To configure the server ensure it is stopped and then edit the configuration. The default configuration is as below:

<!-- This config file contains a minimal set of configurable parameters, and mostly just contains the things you need to change. We created this for those who got scared away from the rather large and heavily commented icecast.xml.dist file. -->

```
<icecast>
<limits>
<sources>2</sources>
</limits>
<authentication>
<source-password>hackme</source-password>
<relay-password>hackme</relay-password>
<admin-user>admin</admin-user>
<admin-password>hackme</admin-password>
</authentication>

<hostname>localhost</hostname>
<listen-socket>
<port>8000</port>
</listen-socket>
<file-serve>1</file-serve>
<paths>
<logdir>./logs</logdir>
<webroot>./web</webroot>
<adminroot>./admin</adminroot>
<alias source="/" dest="/status.xml"/>
</paths>
<logging>
<accesslog>access.log</accesslog>
<errorlog>error.log</errorlog>
<loglevel>3</loglevel> <!-- 4 Debug, 3 Info, 2 Warn, 1 Error -->
</logging>
</icecast>
```

The main setting here that we are interested in is the port and source password we also need to know the IP address of the PC the server is installed on.

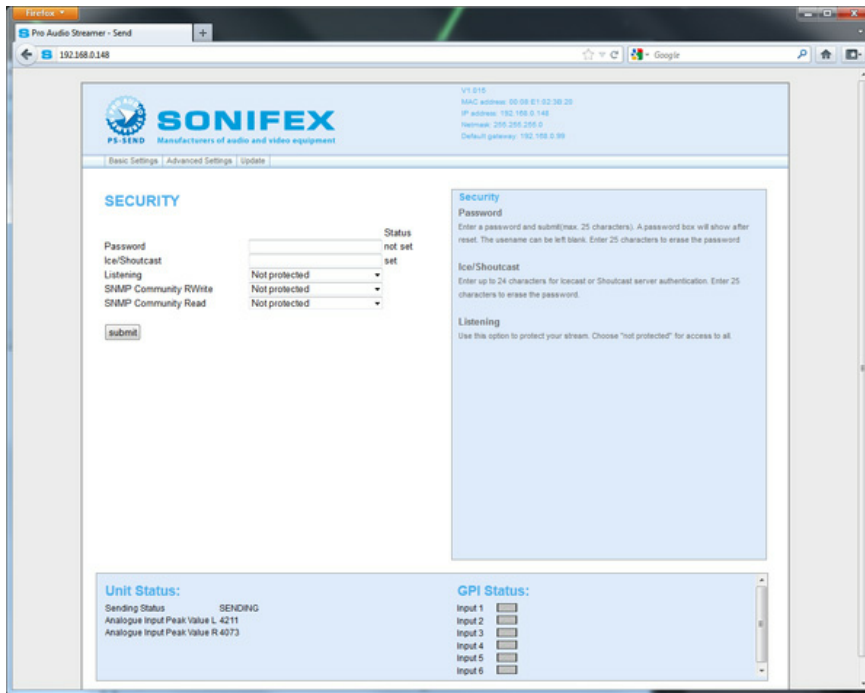
The send is configured as an Icecast source and the destination IP address and port for the Shoutcast server are entered into the basic settings screen as below:

To connect to the Icecast server installed on the test PC we would enter the relevant port number (here 8000) the IP address of the PC Icecast is running on and click submit to apply these settings.

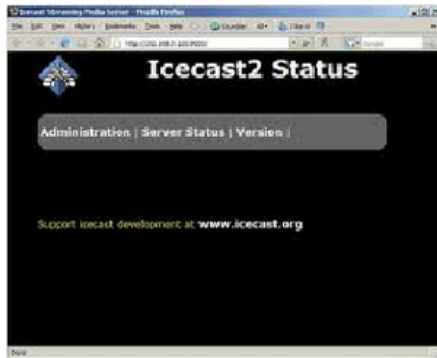
A radio path must also be entered and submitted in the advanced stream settings Radio Path setting.

Then the password in the advanced security screen should also be set to the source password in the Icecast config file, (in this case hackme). If there is already a password set then set will be displayed at the side of this box if not it will read unset.

To enter a new password simply type the password into the box and click submit.

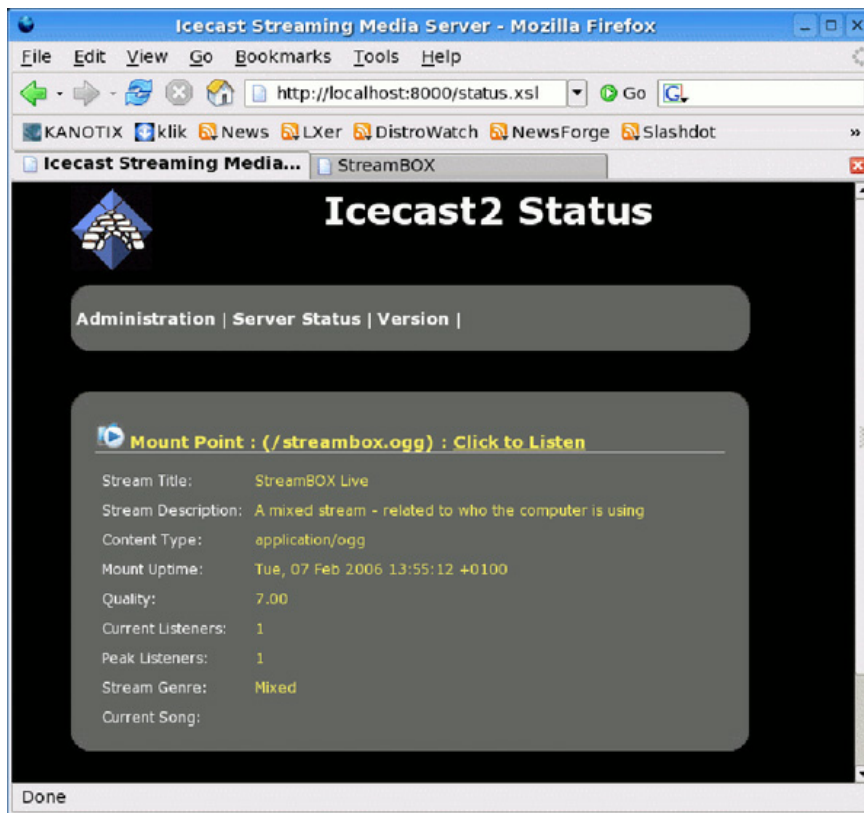


If the Icecast sever is not running then run it now and it should be possible to view a status page in a web browser by typing in the IP address of the PC and port number I.e. for this example: 192.168.0.92:8000.



To view status click the administration menu and when prompted enter the admin user-name and password defined in the Icecast config file.

If the send is streaming correctly then it should be possible to see the radio path we specified as a mount point as below:



If this does not happen and all settings are correct then the most likely problem is that a firewall is blocking some or all of the ports required for use or the Icecast application. To overcome this edit your firewall rules to make an exception for the Icecast application.

Connecting the PS-PLAY/PS-AMP to the icecast server:

Connecting the PS-PLAY to the Icecast server is relatively simple the URL is entered as if it is a standard http stream i.e. URL 1 for our example would be :
http://192.168.0.92:8000/pssend

Icecast Relay:

There are several reasons why it might be beneficial to relay the PS-SEND output via an Icecast server rather than as a source one of these is if a user wishes to embed meta-data in the Shoutcast stream. To achieve this the PS-SEND is set up as if it is just sending a standard http (internet radio) stream to the pc running the Icecast server.



The port must now be a different one from the one used by the Icecast server so for this example port 8001 is used. The password and radio path must all still be specified as well.

Then to begin sending meta-data you would then enter:

```
http://<ip-ps-send>/rc.cgi?E=StreamTitle='Title';
```

in the navigation bar, so in our example:

```
http://192.168.0.148/rc.cgi?E=StreamTitle='U2';
```

The Icecast server itself also needs some additional information so the config file would be changed as below:

```
<!-- This config file contains a minimal set of configurable parameters,
and mostly just contains the things you need to change. We created
this for those who got scared away from the rather large and heavily
commented icecast.xml.dist file. -->
```

```
<icecast>
<limits>
<sources>2</sources>
</limits>
<authentication>
<source-password>hackme</source-password>
<relay-password>hackme</relay-password>
<admin-user>admin</admin-user>
<admin-password>hackme</admin-password>
</authentication>

<hostname>localhost</hostname>
<listen-socket>
<port>8000</port>
</listen-socket>
<fileserve>1</fileserve>
<paths>
<logdir>./logs</logdir>
<webroot>./web</webroot>
<adminroot>./admin</adminroot>
<alias source="/" dest="/status.xml"/>
</paths>
<logging>
<accesslog>access.log</accesslog>
<errorlog>error.log</errorlog>
<loglevel>3</loglevel> <!-- 4 Debug, 3 Info, 2 Warn, 1 Error -->
</logging>
<relay>
<server>192.168.0.148</server>
<port>8001</port>
<mount>/psend</mount>
<local-mount>/test</local-mount>
<relay-shoutcast-metadata>1</relay-shoutcast-metadata>
</relay>
</icecast>
```

The parts that have changed are all in the relay section, the first of these is the <server> field (this is the ip address of our send unit).

The second is <port> (the port of our send unit)

The third is <mount> (the radiopath of the send unit)

the fourth is <local-mount> (the mount point for the relayed stream anything can be specified here but we have used test)

the fifth is <relay-shoutcast-metadata> this is whether we wish to send metadata set to 0 for no data 1 for data, please note if set to 1 and then no metadata is sent from the send then the stream will not be relayed successfully.

Connecting a Play to the relayed stream:

The playurl is then set to the url port and mountpoint of the Icecast server so for this example that would be:

```
http://192.168.0.92:8000/test
```

Shoutcast:

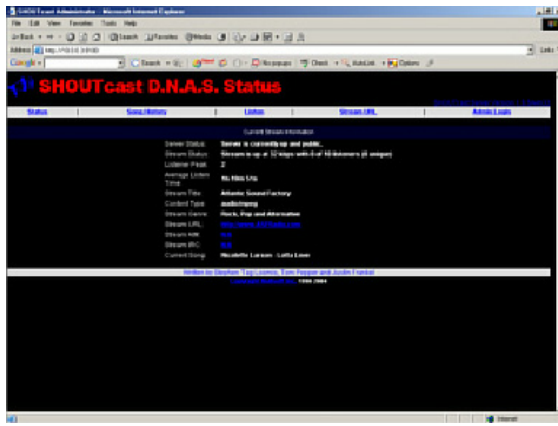
To install a standalone Shoutcast server (non internet hosted), download the applicable version of Shoutcast DNAS2.0 from here:

```
http://www.shoutcast.com/broadcast-tools
```

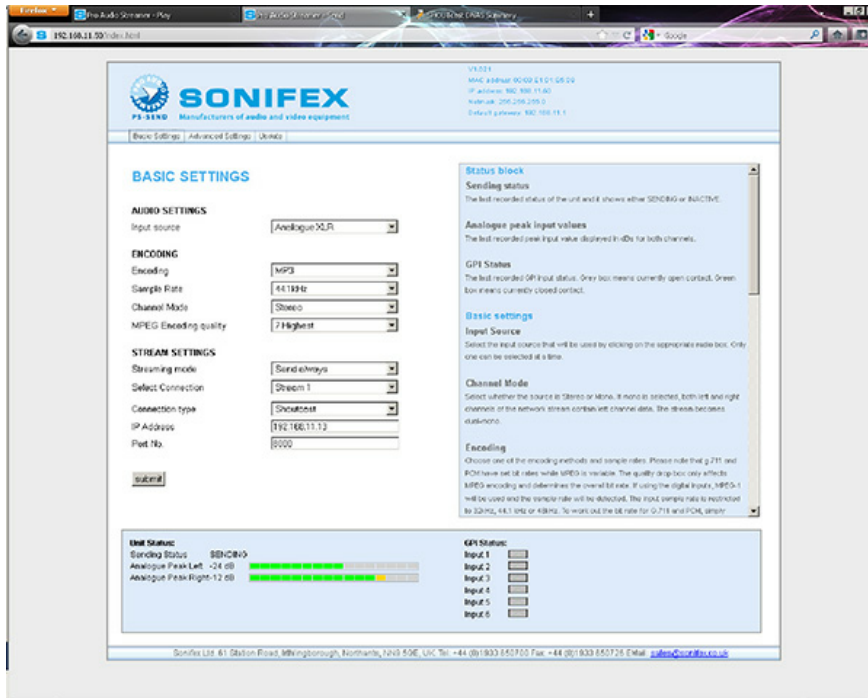
Then run the install package on the PC you intend to run as your Shoutcast server.

Please note Windows Vista and 7 users should install to a directory other than program files that they have full access to or logging etc will fail due to Windows UAE.

Once installed open the installation directory in a file manager there are several default configurations provided



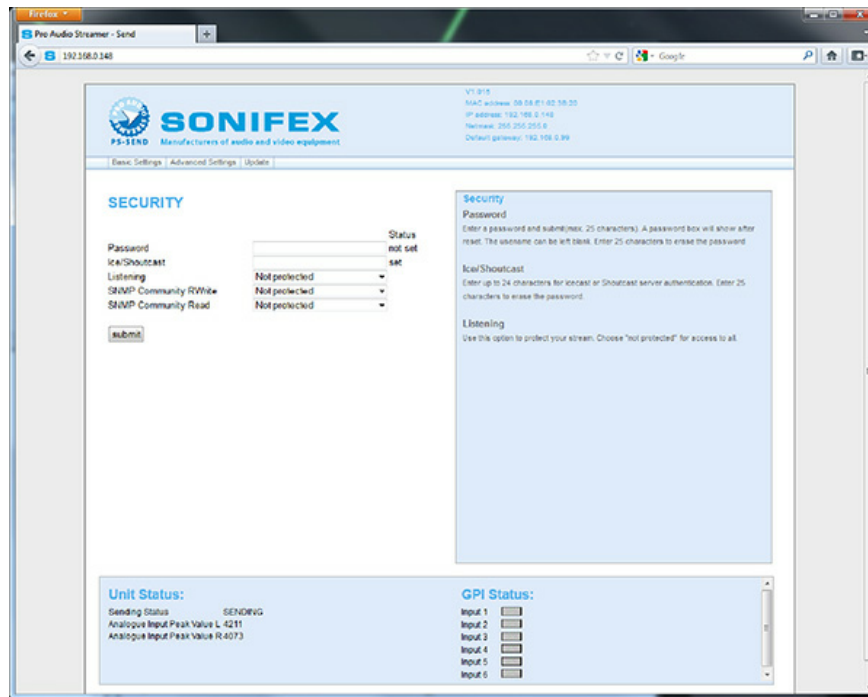
Setting up the PS-SEND is very similar to setting it up for Icecast in the basic settings the IP address of the Shoutcast server PC and the port number should be entered and then submitted, i.e url 1 would be http://192.168.0.92:8000/pssend



The stream settings also need modifying and again these are very similar to Icecast except that icy genre and name must be specified. For example a name of sonifexradio and genre of pop could be used.



Then submit the stream settings. As with Icecast a Shoutcast server requires a password from any sources connecting to it in this case the password in the conf file used is testing, enter this and click submit.



Now if you refresh your Shoutcast web page there should be 1 stream available logging in with the default user/ password of admin/ changeme should show the details of the PS-SEND stream .

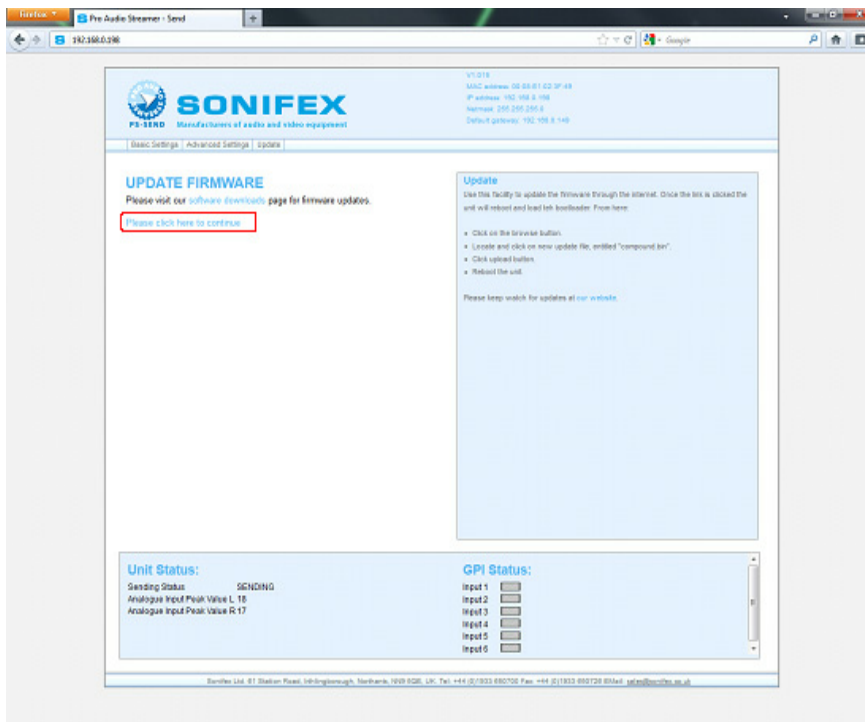
The PS-PLAY setup is identical to the setup for Icecast the only parameters that need to be entered are the IP address and port number of the Shoutcast server.

Pro-Streamer Web Update

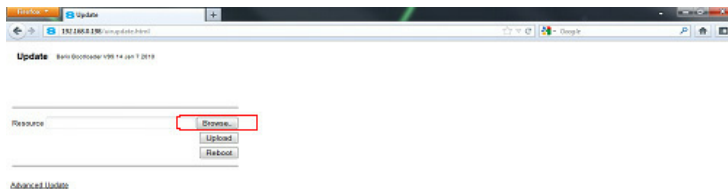
Select 'Update' from the top menu bar.



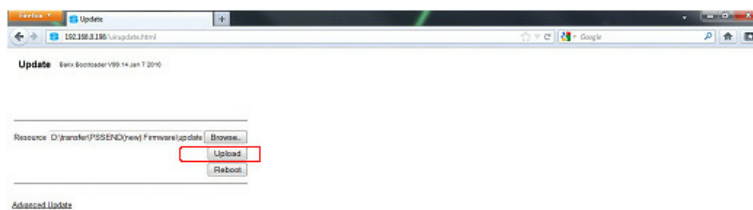
Select 'Please click here to continue'.



Browse to select the firmware that you previously downloaded.



Click 'Upload' to upload the file into the Pro Audio Streamer and wait until the next screen appears.



Select 'Click here to reload the main page'.



Latency Between The Pro Audio Streamer PS-SEND & PS-PLAY/PS-AMP

Both the PS-SEND and the PS-PLAY allow audio to be passed through an IT network infrastructure. The time taken for the audio to appear from the input on the PS-SEND to the PS-PLAY/PS-AMP, or latency, is dependent on a number of factors:

1. The time taken to encode/decode the audio.
2. The time taken for the stream to travel through the network.
3. The time taken to buffer the stream.

1. Latency Involved in Encoding/Decoding The Audio

The encoder samples the audio it receives in order for it to be handled in the digital domain. Sending each sample directly would generate a lot of traffic, for example, a 48kHz sample rate would send 48,000 samples, each within its own Ethernet frame. As an Ethernet frame's minimum size is 60bytes this would lead to traffic of around 23Mbps. So, it's important that samples be grouped into a reasonable packet size in order to avoid clogging up the network.

As an Ethernet frame can carry a payload of around 1500 bytes, 750 samples can be sent. To accumulate 750 samples at 48kHz, approximately 16 ms is required to collect the correct number of samples.

An additional time is added depending on which encoding method is chosen. Higher bit rates mean that the buffer in the PS-PLAY is filled faster and the delay can be reduced. It's also worth noting that the higher the compression of the audio the longer the PS-SEND will take to encode it. That being the case a high compression algorithm like MP3 will introduce a delay, in the order of 20–50ms (dependant on quality settings), whereas using a lower or no compression algorithm, like MPEG2 or PCM, will have less latency.

The decoding of the audio and sample buffer of the D/A in the receiver device will also cause a delay. Again, decoding of MP3 will be more processor intensive. The D/A sample buffer is handled in bytes, which means slower data rates will incur bigger delays at this stage.

2. Latency Involved Over a Network

Another factor involved is the transport protocol selected. HTTP is a TCP protocol which involves hand-shaking and error correction, which slows down packet reception. This means that large amounts are buffering are required for a stable stream which can add a substantial amount of delay. If RTP/ BRTP are chosen, which are based on the UDP protocol, the data is sent much more quickly and therefore less buffering is required, although the trade off is the occasional missed or erroneous packet.

Typically a LAN, (Local Area Network), should involve less latency than an internet stream, although obviously this is very much dependent on network configuration. Local network latency can be minimised in the usual ways such as using intelligent network switches to route traffic to the correct destinations.

3. Latency Involved in Receiving & Buffering The Stream

In a PS-PLAY, the receiver, when receiving an HTTP stream the default buffer is used as standard which is 60kBytes (61440bytes). So the latency for an HTTP stream would be:

For a 192kbs stream:

- $192000/8 = 24000$ bytes
- $61440(\text{buffer})/24000 = 2.56$
- Latency of approx 2.56 seconds

When receiving an RTP stream, more flexibility is allowed and the buffer size can be changed. To make it simpler, rather than having to work out what buffer size is required for a given delay, the P-PLAY accepts a value in milliseconds and makes the calculation.

Found on the 'Streaming Settings' page on the web server, there is a box entitled 'RTP Delay'. The delay should be big enough to account for network jitter, otherwise the stream will become unstable. As mentioned above, the higher the bit rate, the smaller amount of delay required. The following are recommended values to use:

Algorithm & Rate	Recommended Delay
MP3	600ms
uLaw /ALaw 8kHz mono	444ms
PCM 8kHz mono	444ms
uLaw /ALaw 12kHz mono	316ms
PCM 12kHz mono	316ms
uLaw /ALaw 24kHz mono	188ms
PCM 24kHz mono	188m
uLaw /ALaw 32kHz mono	156ms
PCM 32kHz mono	152ms
PCM 44.1kHz mono	110ms
PCM 44.1kHz stereo	79ms
PCM 48kHz stereo	72ms

Conclusion

There are many sources of delay in the system, most significantly buffering to eliminate network jitter. As there will always be a delay present, it is worth configuring the system to use the highest bit rates and sample rates possible, providing that the bandwidth is available.

Some Real World Examples on a Typical Network (PS-SEND to PS-PLAY)

HTTP stream:

- MP3 @ 44.1kHz; Quality setting 7 – 2.85s
- MP3 @ 44.1kHz; Quality setting 0 – 5.62s
- MP3 @ 32kHz; Quality setting 7 – 2.85s
- MP3 @ 32kHz; Quality setting 0 – 7.77s

RTP stream, using recommended RTP Delay settings:

- MP3 @ 44.1kHz; Quality setting 7 – 0.73s
- MP3 @ 44.1kHz; Quality setting 0 – 0.73s
- MP3 @ 32kHz; Quality setting 7 – 0.80s

MP3 @ 32kHz; Quality setting 0 – 0.80s
PCM @ 8kHz 0.51s
PCM @ 48kHz 0.11s

Sonifex Ltd. 61 Station Road, Irthlingborough, Northants, NN9 5QE, UK. Tel: +44 (0)1933 650700 Fax: +44 (0)1933 650726 Email: sales@sonifex.co.uk